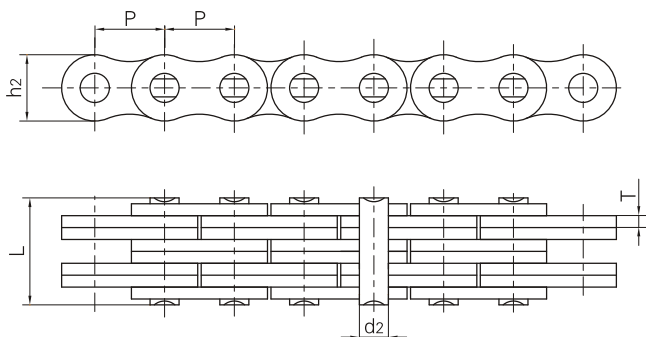
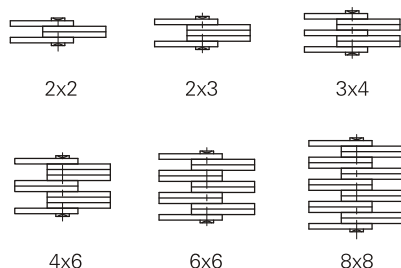


板式鏈
Leaf chains



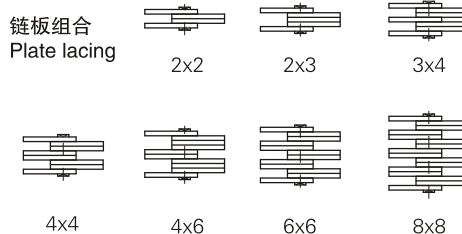
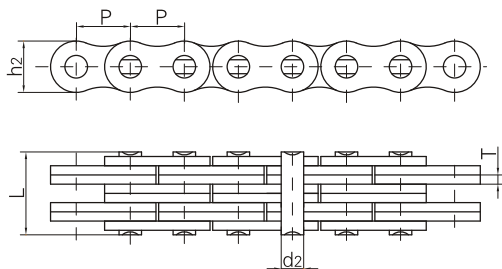
鏈板組合
Plate lacing



ISO 鏈號 ISO Chain No.	ANSI 鏈號 ANSI Chain No.	節距 Pitch P mm	鏈板組合 Plate lacing	鏈板高度 Plate depth h ₂ max mm	鏈板厚度 Plate thickness T max mm	銷軸直徑 Pin diameter d ₂ max mm	銷軸長度 Pin length L max mm	極限拉伸載荷 Ultimate tensile strength Q min kN/LB	平均拉伸載荷 Average tensile strength Q ₀ kN	每米長重 Weight per meter q kg/m
LH0822	BL422	12.7	2 × 2	12.07	2.08	5.09	11.05	22.2/5045	27.6	0.64
LH0823	BL423		2 × 3				13.16	22.2/5045	27.6	0.80
LH0834	BL434		3 × 4				17.40	33.4/7591	41.4	1.12
LH0844	BL444		4 × 4				19.51	44.5/10114	56.0	1.28
LH0846	BL446		4 × 6				23.75	44.5/10114	56.0	1.60
LH0866	BL466		6 × 6				27.99	66.7/15159	81.7	1.92
LH0888	BL488		8 × 8				36.45	89.0/20227	109.4	2.56
LH1022	BL522		15.875				2 × 2	15.09	2.44	5.96
LH1023	BL523	2 × 3		15.37	33.4/7591	43.1	1.10			
LH1034	BL534	3 × 4		20.32	48.9/11114	65.6	1.50			
LH1044	BL544	4 × 4		22.78	66.7/15159	84.5	1.80			
LH1046	BL546	4 × 6		27.74	66.7/15159	84.5	2.20			
LH1066	BL566	6 × 6		32.69	100.1/22750	125.1	2.65			
LH1088	BL588	8 × 8		42.57	133.4/30318	169.5	3.50			
LH1222	BL622	19.05		2 × 2	18.11	3.30	7.94			
LH1223	BL623		2 × 3	20.73				48.9/11114	63.6	1.80
LH1234	BL634		3 × 4	27.43				75.6/17181	102.8	2.50
LH1244	BL644		4 × 4	30.78				97.9/22250	120.9	2.90
LH1246	BL646		4 × 6	37.49				97.9/22250	120.9	3.60
LH1266	BL666		6 × 6	44.20				146.8/33364	190.8	4.30
LH1288	BL688		8 × 8	57.61				195.7/44477	238.8	5.80
LH1622	BL822		25.4	2 × 2				24.13	4.09	9.54
LH1623	BL823	2 × 3		25.48	84.5/19204	108.2	2.70			
LH1634	BL834	3 × 4		33.76	129.0/29318	170.0	3.80			
LH1644	BL844	4 × 4		37.90	169.0/38409	214.6	4.30			
LH1646	BL846	4 × 6		46.18	169.0/38409	214.6	5.40			
LH1666	BL866	6 × 6		54.46	253.6/57636	324.5	6.50			
LH1688	BL888	8 × 8		71.02	338.1/76841	432.7	8.60			



板式鏈
Leaf chains



ISO 链号 ISO Chain No.	ANSI 链号 ANSI Chain No.	节距 Pitch P mm	链板组合 Plate lacing	链板高度 Plate depth h ₂ max mm	链板厚度 Plate thickness T max mm	销轴直径 Pin diameter d ₂ max mm	销轴长度 Pin length L max mm	极限拉伸载荷 Ultimate tensile strength Q min kN/LB	平均拉伸载荷 Average tensile strength Q ₀ kN	每米长重 Weight per meter q kg/m
LH2022	BL1022	31.75	2 × 2	30.18	4.9	11.11	25.37	115.6/26272	150.8	3.40
LH2023	BL1023		2 × 3				30.33	115.6/26272	150.8	4.30
LH2034	BL1034		3 × 4				40.23	182.4/41454	231.6	6.00
LH2044	BL1044		4 × 4				45.19	231.3/52568	291.4	6.90
LH2046	BL1046		4 × 6				55.09	231.3/52568	291.4	8.60
LH2066	BL1066		6 × 6				65.00	347.0/78863	430.3	10.30
LH2088	BL1088		8 × 8				84.81	462.6/105136	555.1	13.80
LH2422	BL1222		38.1				2 × 2	36.20	5.77	12.71
LH2423	BL1223	2 × 3		35.43	151.2/34363	192.0	5.8			
LH2434	BL1234	3 × 4		47.07	244.6/55591	315.9	8.1			
LH2444	BL1244	4 × 4		52.88	302.5/68750	381.1	9.3			
LH2446	BL1246	4 × 6		64.52	302.5/68750	381.1	11.6			
LH2466	BL1266	6 × 6		76.15	453.7/103113	543.6	13.9			
LH2488	BL1288	8 × 8		99.42	605.0/137500	726.0	18.6			
LH2822	BL1422	44.45		2 × 2	42.24	6.55	14.29			
LH2823	BL1423		2 × 3	40.16				191.3/43477	225.7	7.6
LH2834	BL1434		3 × 4	53.37				315.8/71772	372.6	10.6
LH2844	BL1444		4 × 4	59.97				382.6/86954	451.2	12.2
LH2846	BL1446		4 × 6	73.18				382.6/86954	451.2	15.2
LH2866	BL1466		6 × 6	86.39				578.3/131431	682.4	18.2
LH2888	BL1488		8 × 8	112.8				765.1/173886	902.8	24.3
LH3222	BL1622		50.8	2 × 2				48.26	7.52	17.46
LH3223	BL1623	2 × 3		46.58	289.1/65704	341.1	10.0			
LH3234	BL1634	3 × 4		61.72	440.4/100091	519.6	14.0			
LH3244	BL1644	4 × 4		69.29	573.8/131431	680.4	16.0			
LH3246	BL1646	4 × 6		84.43	578.3/131431	680.4	20.0			
LH3266	BL1666	6 × 6		99.57	857.4/194863	1000.7	24.0			
LH3288	BL1688	8 × 8		129.84	1156.5/262841	1364.6	32.0			
LH4022	BL2022	63.5		2 × 2	60.33	9.91	23.81			
LH4023	BL2023		2 × 3	61.70				433.7/98568	511.7	19.8
LH4034	BL2034		3 × 4	81.61				649.4/147590	766.2	27.7
LH4044	BL2044		4 × 4	91.57				867.4/197163	1023.5	31.6
LH4046	BL2046		4 × 6	111.48				867.4/197163	1023.5	39.5
LH4066	BL2066		6 × 6	131.39				1301.1/295704	1535.2	47.4
LH4088	BL2088		8 × 8	171.22				1734.8/394272	2046.5	63.2