

0451



UNIVERSAL HINGE WITH THREADED STUD FOR MOUNTING ON STRAIGHT DOOR

Material:

Reinforced polyamide.
Oils and greases resistant.

Surface:

Satin.

Colour:

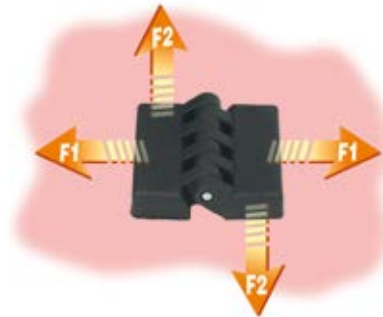
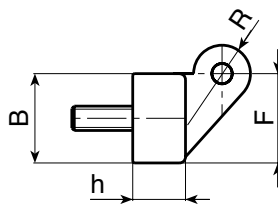
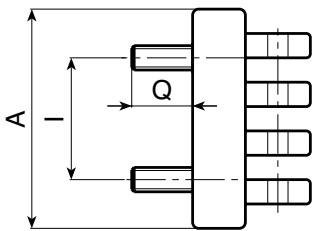
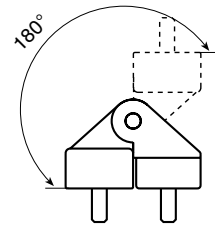
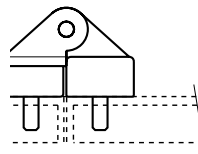
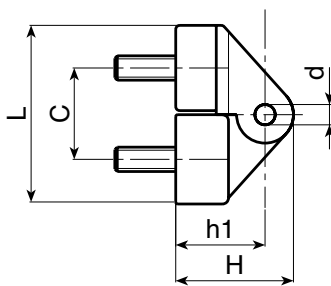
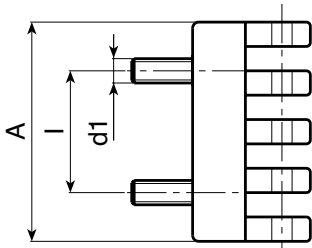
Black (RAL 9011).

Inserts:

- Zinc plated steel pin.
- Zinc plated steel threaded stud (tolerance 6g).

SPECIAL REQUESTS:

- None.



| | art. | I | C | A | B | L | F | h | h1 | H | d | R | d1 6g | Q | △ g | F1 (N) | F2 (N) |
|---|------------------|----|----|----|----|----|----|----|----|----|---|----|-------|----|-----|--------|--------|
| ● | 045130.TM05X1001 | 15 | 18 | 30 | 17 | 35 | 18 | 11 | 19 | 25 | 4 | 11 | M05 | 10 | 38 | 690 | 1080 |
| ● | 045154.TM06X1501 | 30 | 22 | 54 | 21 | 44 | 22 | 13 | 22 | 30 | 5 | 15 | M06 | 15 | 72 | 295 | 1670 |
| ● | 045178.TM08X2001 | 42 | 32 | 78 | 30 | 61 | 30 | 18 | 31 | 42 | 8 | 21 | M08 | 20 | 190 | 1025 | 2830 |

HINGES

ver. OUK.19-0916



BOTECA

O - 12

Presumable presence in the stock in %

() 90% (●) 40% (●) 5% (●)

www.boteco.it - © All right reserved - BOTECA®

Any unauthorized reproduction is strictly forbidden