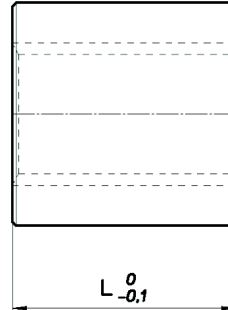
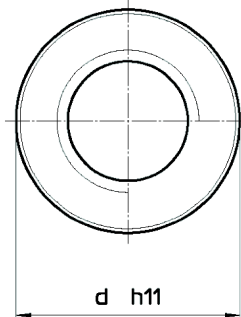


HENGERES BRONZ ANYA CILINDRICAL BRONZE NUT



| | |
|-----------------------|--------------|
| Anyag | bronz |
| Material | bronze |
| Hegeszthetőség | --- |
| Weldable | --- |
| Típus | HSN (79.012) |
| Type | HBD (79.022) |

| Cikkszám Code | | Ø x emelkedés Ø x lead | Bekezd. Thread starts | d mm | L mm | Tömeg Weight (kg) | At* mm ² |
|------------------|-------------|---------------------------|--------------------------|---------|---------|-------------------------|------------------------|
| jobb right | bal left | | | | | | |
| 79.022.009 | 79.022.007 | Tr 10x2 | 1 | 22 | 20 | 0,058 | 200 |
| 79.022.003 | 79.022.001 | Tr 10x3 | 1 | 22 | 20 | 0,057 | 320 |
| 79.012.015 | 79.012.012 | Tr 12x3 | 1 | 36 | 36 | 0.302 | 594 |
| 79.022.014 | 79.022.011 | Tr 12x3 | 1 | 26 | 24 | 0,094 | 396 |
| 79.022.017 | --- | Tr 12x6 (P3) | 2 | 26 | 24 | 0,094 | 396 |
| 79.022.032 | 79.022.029 | TR 14x3 | 1 | 30 | 28 | 0,146 | 526 |
| 79.012.024 | 79.012.021 | Tr 14x4 | 1 | 36 | 36 | 0.290 | 677 |
| 79.022.024 | 79.022.021 | Tr 14x4 | 1 | 30 | 28 | 0,146 | 526 |
| 79.012.039 | 79.012.036 | Tr 16x4 | 1 | 36 | 36 | 0.276 | 792 |
| 79.022.038 | 79.022.035 | Tr 16x4 | 1 | 36 | 32 | 0,245 | 704 |
| 79.012.042 | --- | Tr 16x8 (P4) | 2 | 36 | 36 | 0.276 | 792 |
| 79.012.048 | 79.012.045 | Tr 18x4 | 1 | 36 | 36 | 0.259 | 905 |
| 79.012.057 | 79.012.054 | Tr 20x4 | 1 | 40 | 40 | 0.354 | 1130 |
| 79.022.056 | 79.022.053 | Tr 20x4 | 1 | 45 | 40 | 0,476 | 1130 |
| 79.012.060 | --- | Tr 20x8 (P4) | 2 | 40 | 40 | 0.354 | 1130 |
| 79.012.069 | 79.012.066 | Tr 22x5 | 1 | 40 | 40 | 0.33 | 1225 |
| 79.022.068 | 79.022.065 | Tr 22x5 | 1 | 45 | 40 | 0,456 | 1225 |
| 79.022.077 | 79.022.074 | Tr 24x5 | 1 | 50 | 48 | 0,680 | 1620 |
| 79.012.087 | 79.012.084 | Tr 25x5 | 1 | 45 | 45 | 0.47 | 1590 |
| 79.012.090 | --- | Tr 25x10 (P5) | 2 | 45 | 45 | 0.47 | 1590 |
| 79.022.101 | 79.022.098 | Tr 26x5 | 1 | 50 | 48 | 0,648 | 1770 |
| 79.012.111 | 79.012.108 | Tr 28x5 | 1 | 45 | 45 | 0.42 | 1800 |
| 79.022.111 | 79.022.108 | Tr 28x5 | 1 | 60 | 60 | 1,237 | 2400 |
| 79.012.114 | --- | Tr 28x10 (P5) | 2 | 45 | 45 | 0.42 | 1800 |
| 79.012.136 | 79.012.133 | Tr 30x6 | 1 | 50 | 50 | 0.60 | 2120 |
| 79.012.139 | --- | Tr 30x12 (P6) | 2 | 50 | 50 | 0.60 | 2120 |
| 79.022.147 | 79.022.144 | Tr 32x6 | 1 | 60 | 60 | 1,145 | 2733 |
| 79.012.175 | 79.012.172 | Tr 35x6 | 1 | 55 | 55 | 0.75 | 2764 |
| 79.022.183 | 79.022.180 | Tr 36x6 | 1 | 75 | 72 | 2,189 | 2610 |
| 79.012.211 | 79.012.208 | Tr 40x7 | 1 | 60 | 60 | 0.92 | 3440 |



| Cikkszám Code | | Ø x emelkedés Ø x lead | Bekezd. Thread starts | d mm | L mm | Tömeg Weight (kg) | At* mm ² |
|------------------|-------------|---------------------------|--------------------------|---------|---------|-------------------------|------------------------|
| jobb right | bal left | | | | | | |
| 79.022.211 | 79.022.208 | Tr 40x7 | 1 | 80 | 80 | 2,823 | 4587 |
| 79.012.214 | --- | Tr 40x14 (P7) | 2 | 60 | 60 | 0.92 | 3440 |
| 79.012.238 | 79.012.235 | Tr 45x8 | 1 | 65 | 65 | 1.10 | 4186 |
| 79.012.262 | 79.012.259 | Tr 50x8 | 1 | 70 | 70 | 1.30 | 5057 |
| 79.012.268 | --- | Tr 55x9 | 1 | 80 | 80 | 2.07 | 6345 |
| 79.012.274 | 79.012.271 | Tr 60x9 | 1 | 80 | 80 | 1.75 | 6975 |
| 79.022.279 | 79.022.276 | Tr 70x10 | 1 | 110 | 140 | 7,548 | 10200 |
| 79.022.285 | 79.022.282 | Tr 80x10 | 1 | 120 | 160 | 9,600 | 18850 |

* Az orsó és az anya közötti érintkezési felület Contact surface between the screw and nut