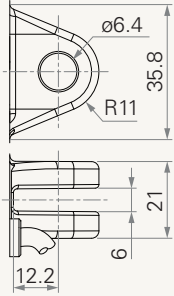
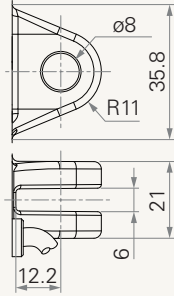


Rear Attachment (mm)

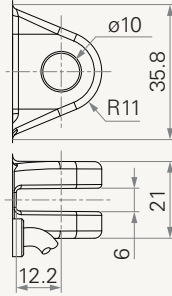
1 = Aluminum casting, U clevis, width 6.0, depth 12.2, hole 6.4, one piece casting with gear box



2 = Aluminum casting, U clevis, width 6.0, depth 12.2, hole 8.0, one piece casting with gear box

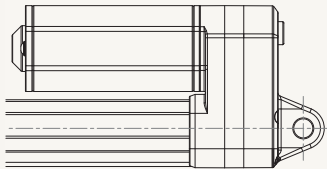


3 = Aluminum casting, U clevis, width 6.0, depth 12.2, hole 10.0, one piece casting with gear box



Direction of Rear Attachment (Counterclockwise)

1 = 90°



2 = 0°

